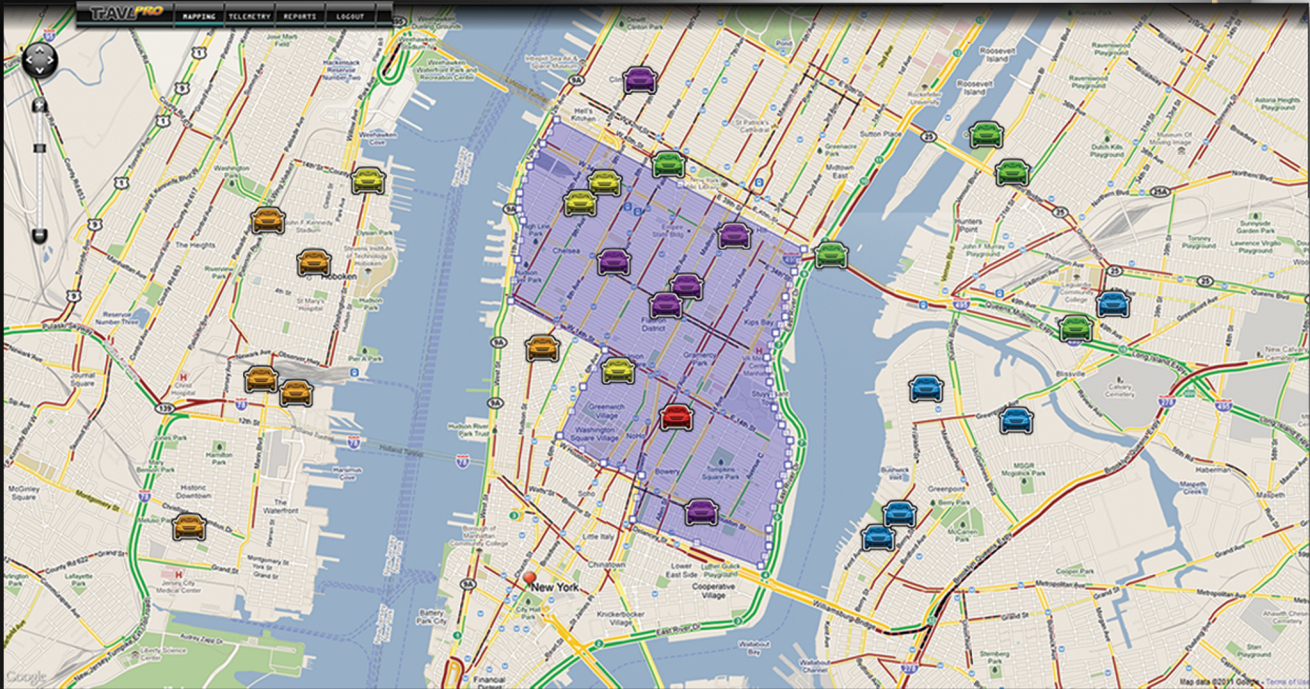


TrAVL PRO



Web-based Fleet Management

Available on
Apple iPad



with User-defined Telemetry

FEATURES

- High-Def Google Mapping™
- Unit Texting
- Geofence Management
- Speed Limit Management
- SCADA Capable
- Individual Unit Tracking
- Landmark & Location Search
- Fleet & Unit Reports
- Alarms & Alerts

TrAVL PRO Supports
MOTOTRBO™ Connect Plus
and PassPort NTS®
Radio Systems.

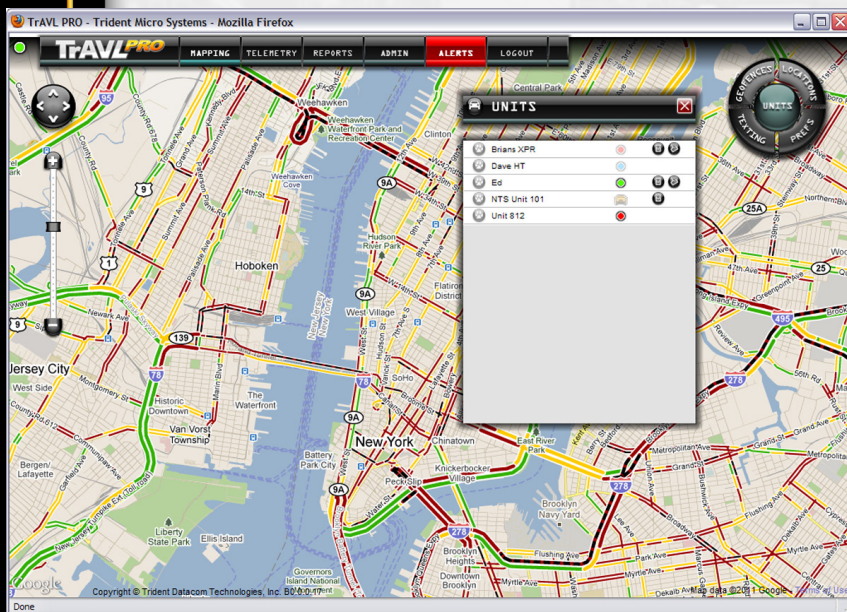
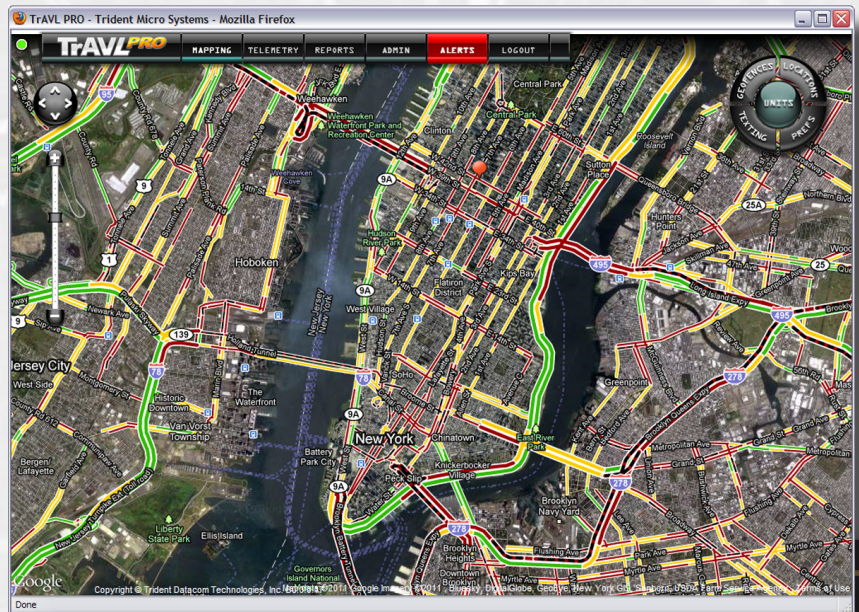
TRIDENT
MICRO SYSTEMS

TrAVL PRO

TrAVL PRO

TrAVL PRO is a web-based, AVL/Texting fleet management application with a set of leading-edge interactive tools. With a higher level of ergonomic look and feel, TrAVL PRO is easy to use, and has greater customer appeal.

TrAVL PRO is the big brother to TrAVL MAX, giving you all the capabilities of TrAVL MAX and a whole lot more. TrAVL PRO provides Connect Plus and PassPort NTS system operators with an intuitive set of interactive fleet and fixed asset management tools. TrAVL PRO allows communication with an unlimited number of subscribers. Multiple TrAVL PRO installations have secure access to a single Connect Plus system while maintaining fleet viewing privacy. Nobody sees your fleet, your messages, or your data, but you. This makes it possible for fleet management to be maintained by several departments within a large organization and by multiple customers all on the same system.

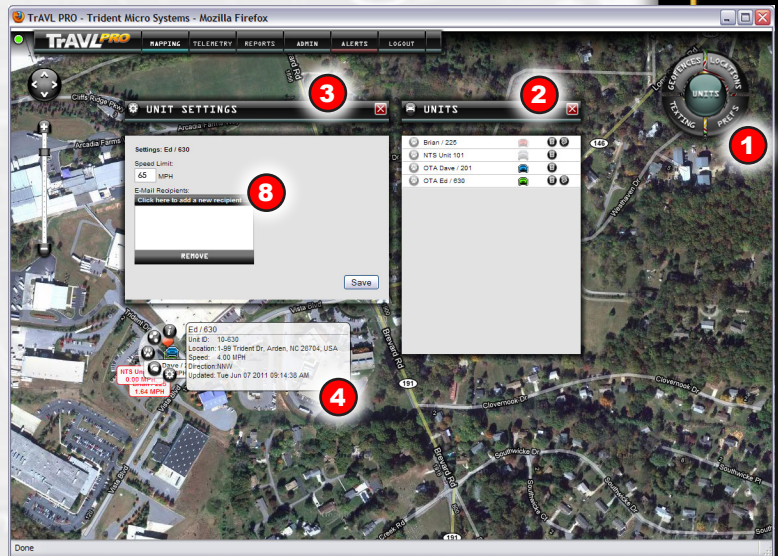


TrAVL PRO's pop-up menus are designed for minimum map interference while providing intuitive feature control.

The NaviSphere (1) resides in the upper right corner of the map and is the source of all map feature menus. It rests in a semitransparent mode to aide in maximum map view and is displayed in full-function view when moused over. The five parts of the NaviSphere are: Units, Geofences, Locations, Texting, and Prefs.

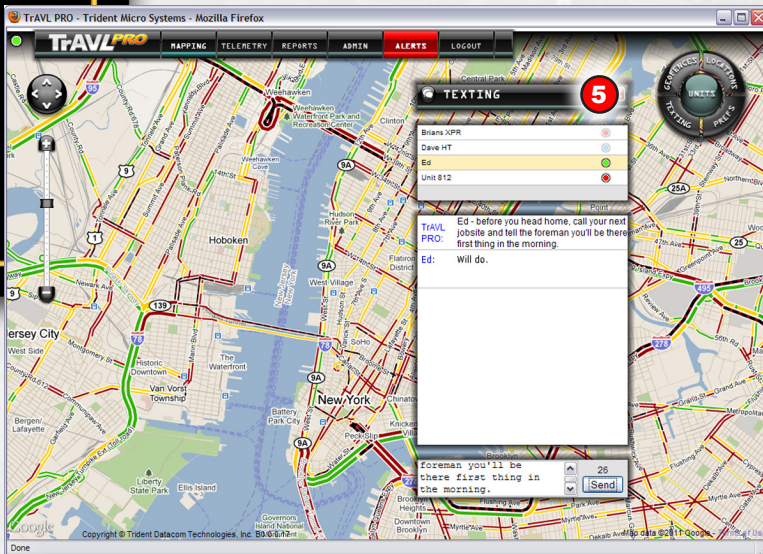
The Units (2) window displays a listing of the individual subscribers, their unit icons, icons for speed limits and geofences.

The Unit Settings (3) window is opened by clicking the settings icon in the Call-out Menu (4) and is used to set speed limits for individual units.

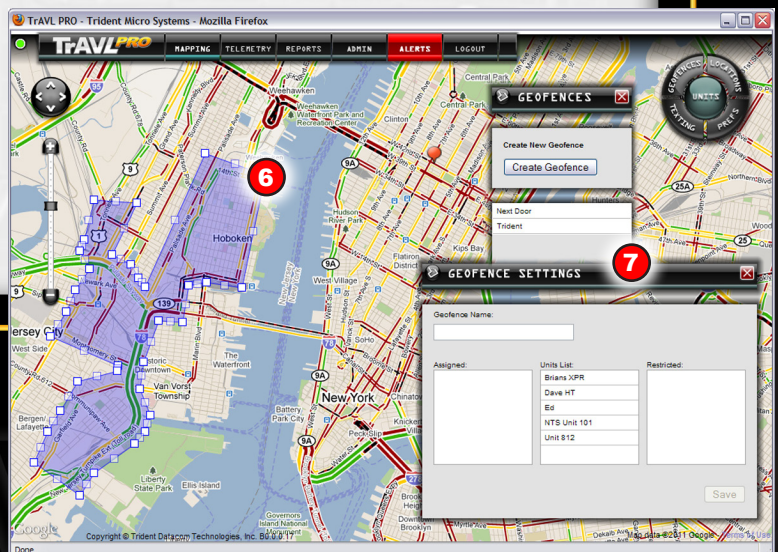


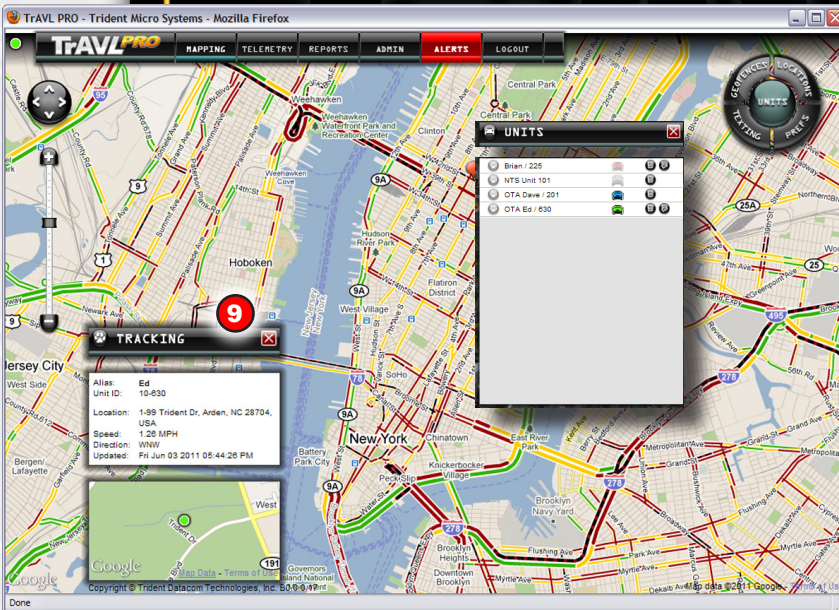
The Texting (5) window allows for multiple texting conversations to be carried on between the operator and individual units. The operator may select a unit from the list and initiate a texting conversation by sending a message in the lower part of the window.

A Geofence is an area of a map, displayed in a blue transparent overlay (6), that a unit may be assigned to, or restricted from, as designated by the operator. Geofences are designed by clicking boundary points directly on the map and may be modified, saved, assigned, and deleted by the operator at any time (7). Multiple geofences may be created and stored. TrAVL MAX allows multiple units may be assigned to a single geofence and have multiple geofences assigned to a single unit.

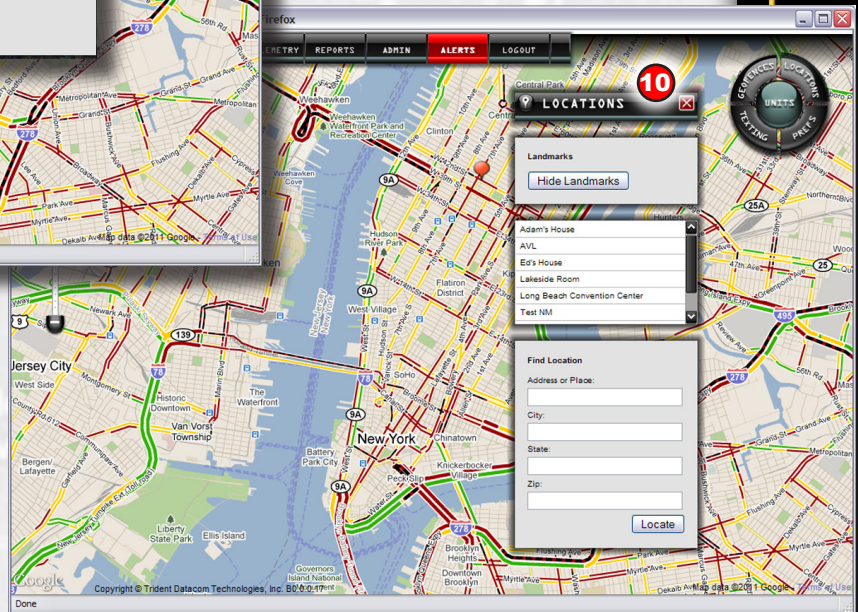


If a unit violates its geofence rule, an alert is automatically displayed on the map and an alert email is sent to a list of recipients (8). This alert provides the location of the unit at the time of violation and the type of geofence violation that has occurred. If a Unit has previously violated a geofence and then returns to a state where it is not violating that geofence, a Geofence Return Alert will be displayed.





The Tracking window (9) allows the operator to select and follow any chosen unit. Tracker assignment is made by either right-clicking a unit on the map to open the Call-out Menu or through the Units window. Handy for special assignments, following an ailing vehicle, or a wandering driver.



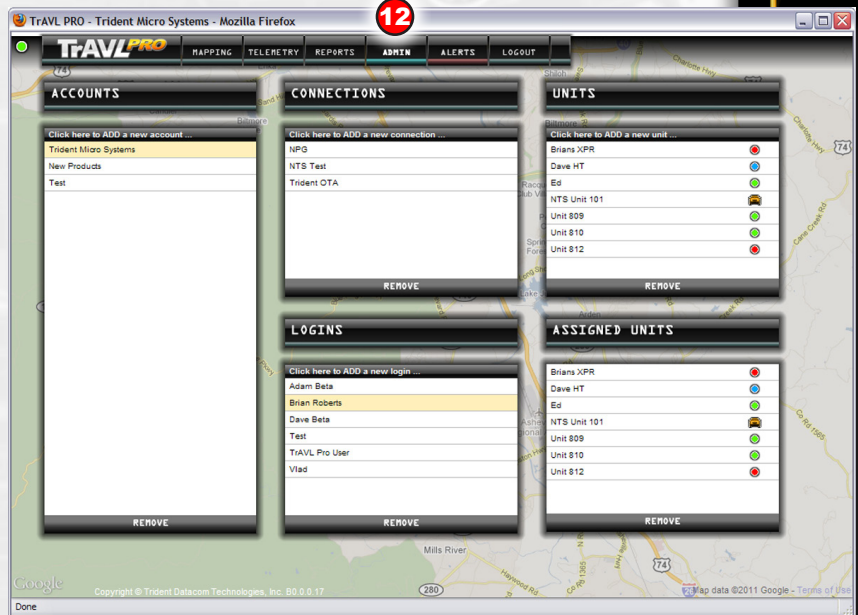
Locations (10) allows the operator to display, or hide, the user defined landmarks that have been recorded in TrAVL PRO. Landmarks may be recorded in one of two ways. First, by right-clicking on the map to open the Call-out Menu and clicking the landmark icon. Second, by opening the Locations window from the NaviSphere and entering search data in the Find Location fields. The Locations window also displays a list of previously located/saved landmarks.



The Preferences (11) window allows for a variety of display settings to be controlled including: Map Type, Traffic, Default Map Location, Measuring System, and Labels On or Off.

Admin (12) allows the administrative operator to manage the Accounts on the radio system. This includes managing the radio system Connections, Units that are assigned to each account, account Logins and passwords, and Assigned Units. Listings are added to and removed from the configuration under the control of the system administrator.

TrAVL PRO's Telemetry (13) feature allows for the display of up to 16 real-time data readouts. Each unit in the fleet is listed by its Alias, followed by the Date & Time, then a series of data values. These values may represent any function of the asset as determined by the fleet owner . .



. . . and may include: engine on/off, oil pressure, engine temp, lights on/off, bus doors open/closed, dump truck dumping, cement pouring, etc. Any asset function that can support a notification sensor, can be represented on the TrAVL PRO operator's screen.

And the data is not limited to tabbed numerical listings. The data is also displayed in user defined gauges. These gauges give the operator info at-a-glance. The Gauge Configurator (14) allows the operator to determine gauge name, color, style, mins/maxs, and more, creating a customized view of your fleet's status.



TrAVL PRO Report Generator (15) leads the operator through a step-by-step process to create the desired report.

Step 1 is "Output" which is set to be immediate or scheduled. If Immediate, the report is generated now. If Scheduled, the report is controlled by times and dates.

Step 2 is "Type" which determines what data is to be reported, such as Stops History, Speed or Geofence Violations, or Unit and Fleet Summary.

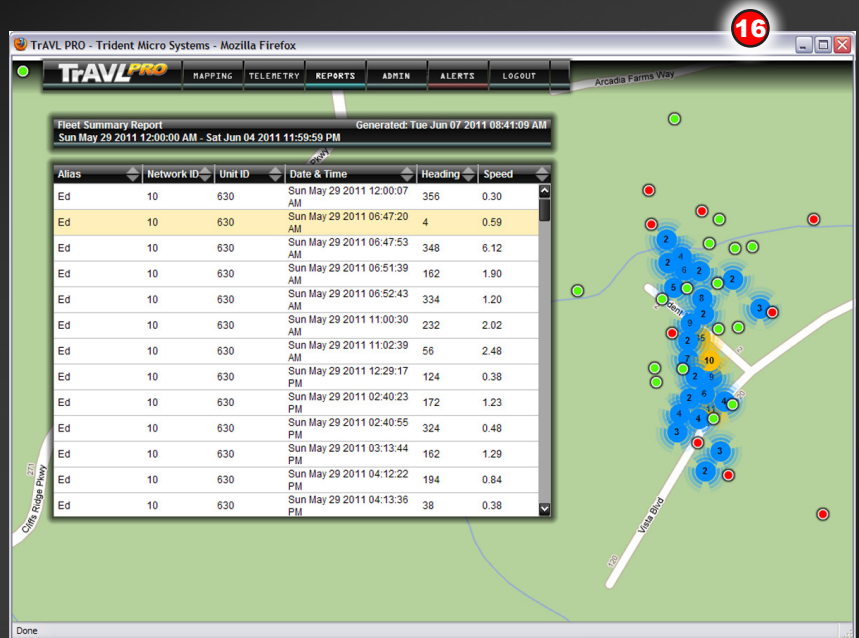
Step 3 controls the "Period" of time the report covers.

Step 4 determines which "Units" will be reported on.

Step 5 is where the operator sets the report "Schedule" information including who the report, when it's generated, will be sent to.

Step 6 provides a SAVE button for scheduled reports or a GENERATE button for immediate reports. This step is also a watchdog for any unanswered fields.

The Report Page (16) is displayed, with all requested information, on the mapping screen. Displayed on the mapping screen are all the referenced data points. Any point may be clicked on to view the associated line of data.



TrAVL PRO

TRIDENT
MICRO SYSTEMS

Two Trident Drive, Arden, NC 28704
828-684-7474 • 800-798-7881 • Fax 828-684-7874
www.tridentms.com • sales@tridentms.com



v1.8